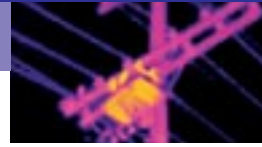


ThermoView™ Ti30

High Performance Thermal Imager



High Performance Thermal Imager for Predictive Maintenance



- Displays Thermal Image and Temperature
- Scans Quickly and Smoothly
- Includes InsideIR™ Software for Analysis and Reporting

Introducing the ThermoView Ti30 thermal imager—the first affordable thermal imager specifically designed for predictive maintenance, with just what maintenance professionals need to conduct thermographic inspections anytime, anywhere.

 **Raytek®**

ThermoView Ti30

High Performance Thermal Imager for Predictive Maintenance



First of its kind, the ThermoView Ti30 thermal imager offers breakthrough performance for maintenance engineers, managers, crews—anyone who ever wanted to do thermographic inspections on their own terms. For optimal results and quick payback, professionals use the ThermoView Ti30 thermal imager in every inspection—not just in a crisis or for an annual maintenance check.

Easily capture thermal images with the ThermoView Ti30 thermal imager during scanning with simple “click” of a trigger. Save images for downloading into companion InsideIR soft-

ware for qualitative and quantitative thermal imaging analysis and reporting.

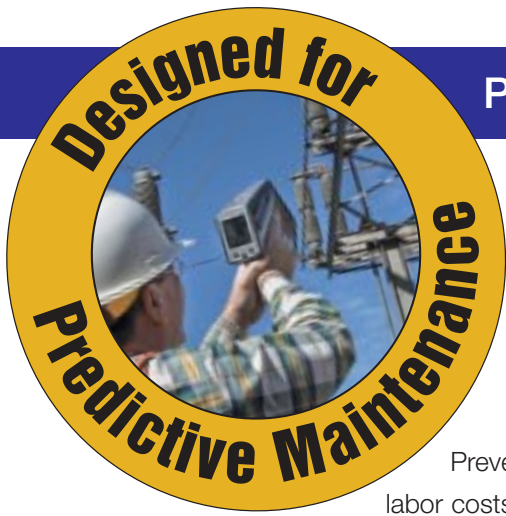
Preventive and predictive maintenance (PPM) programs are cost-effective with the ThermoView Ti30 thermal imager, an easy to use, rugged radiometric thermal imager featuring breakthrough performance at an unprecedented price.

- 1 Record image**
- 2 Download image and data**
- 3 Create and share reports**
- 4 Evaluate success of follow-up actions**

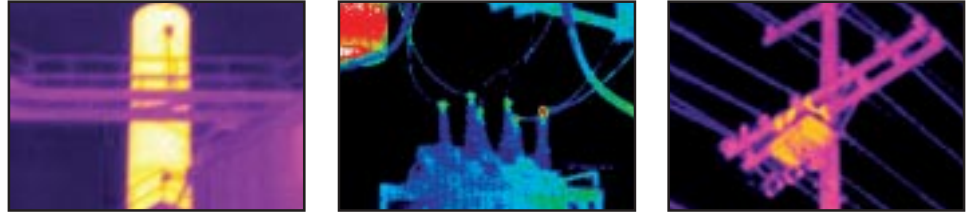
Included with ThermoView Ti30 Thermal Imager

- Interactive User's Manual (CD ROM)
- InsideIR™ Companion Software
- Docking Station/Charger with Universal Power Adapter
- Hardshell Carrying Case
 - USB Computer Cable
 - Rechargeable Battery Pack
 - Non-rechargeable Battery Pack (batteries not included)
 - Multi-Language Training Materials (CD ROM)
 - Carrying Pouch
 - Quick Reference Card





Preventive and Predictive Maintenance Programs

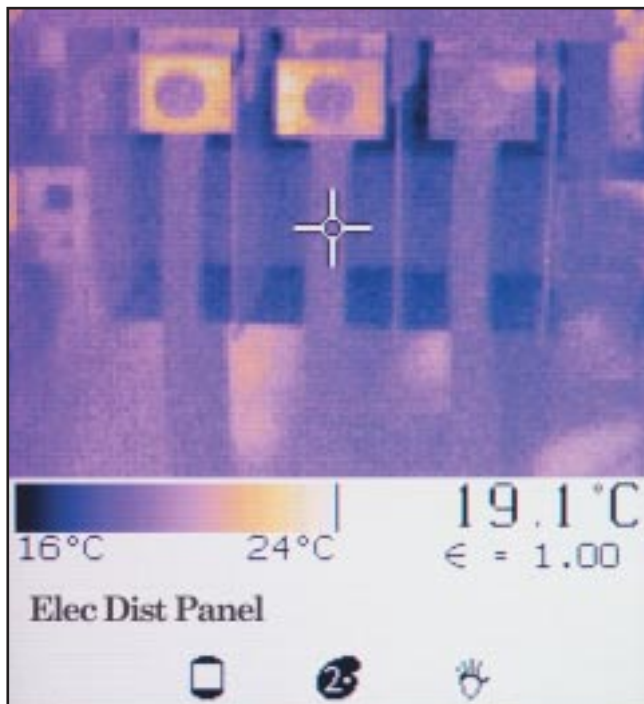


Preventive and predictive maintenance (PPM) programs can greatly minimize repair and labor costs, reduce inventory of parts, and avoid product variation and production loss.

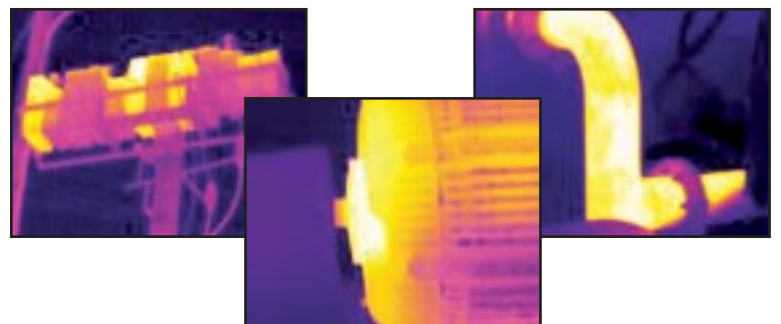
Thermal imaging has emerged as an effective predictive maintenance technology by identifying variations that can lead to equipment failure. Start or extend PPM programs with the ThermoView Ti30 thermal imager by assigning unique names and valuable comments to measurement locations while performing the maintenance routines. Download the thermal images and data into InsideIR software to place readings and images in reports for analyzing and follow-up reporting. Assess repair status and results by combining ThermoView Ti30 thermal imager measurements and the InsideIR software reports to ensure consistent and repeatable measurements and documentation.



Recording Radiometric Readings



The ThermoView Ti30 thermal imager displays clear, clean thermal images while automatically recording radiometric readings for complete records. The laser functions as a sighting aid to help pinpoint the details of the target, using a crosshatch at the center of the image that identifies the temperature spot. The ThermoView Ti30 thermal imager captures the radiometric readings and accompanying thermal images shown on the LCD screen for future quantitative or qualitative reporting.



Solutions with InsideIR™ Software

The ThermoView Ti30 thermal imager includes a Windows® based PC application, InsideIR software—for thermal analysis and reporting. Set the imager in its docking station to download fully calibrated thermal images in seconds with the press of a button. Temperature spots, histograms, isotherms, emissivity and reflected temperature compensation are some of the tools built into the package.



Thumbnail view of downloaded images



Reporting Screen

Training

In addition to all of the great product features that come with the ThermoView Ti30 thermal imager, Raytek also offers a free two-day training session in Basic Thermal Imaging Theory and Applications with every imager purchase.* The training is designed to shorten the learning curve typically associated with preventive and predictive maintenance (PPM) programs by providing key information on thermal imaging techniques, electrical and mechanical applications, and guidelines for implementing PPM programs.

Included with the imager is an Interactive User's Manual, which provides product information and other valuable resources, such as predictive maintenance infrared theory, and a primer on predictive maintenance.

**One free seat per purchase. Training package may vary by country.*

Here's how easy

Gain control

Adjust the contrast of the image



Focus Wheel

Focus the unit from 61cm (21 in) to infinity

Trigger

Freeze an image prior to storage or discard frozen image without saving

Lens Cover

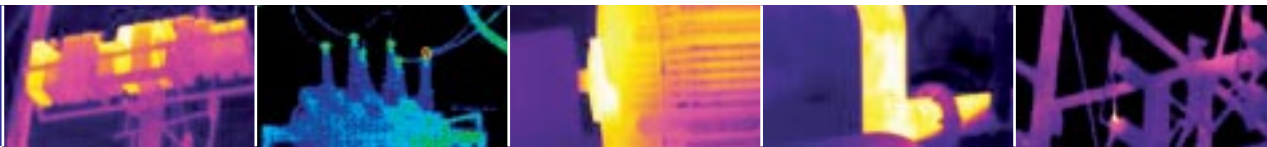
Open to turn power ON
Slide shut to turn power OFF

Docking Station

Both a recharging stand and data communications connection

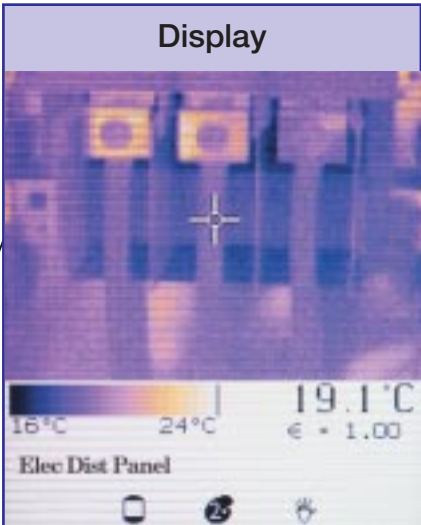


it is...



Level control
Adjust the brightness of the image

Switch Bay
Controls for °F or °C, LCD illumination, palette selection, measurement mode, and laser on/off selections



USB Field Connection
Connect directly to a laptop for easy downloads

Down Button
Decrement parameter values

Mode Button
Cycle between the different operations

Up Button
Increment parameter values

Battery Compartment
Rechargeable battery pack or 6 AA batteries



ThermoView Ti30 Specifications and Features

Thermal	Thermal Measurement Range	0 to 250°C (32 to 482°F)
	Accuracy	±2% or ±2°C, whichever is greater at calibration geometry and 25°C
	Repeatability	±1% or ±1°C, whichever is greater
	NETD	250 mK
	Temperature Indication Resolution	0.1 (°F or °C)
Optical/ IR	Spectral Range	7-14 microns
	Target Sighting	Single Laser Dot (Meets IEC Class 2 & FDA Class II requirements)
	Optical Resolution	90:1
	Minimum Diameter Measurement Spot	7mm (0.27") at 60cm (24")
	Image Frame Rate	20Hz
Controls	Field of view (FOV)	17° Horizontal x 12.8° Vertical
	Instantaneous Field of view (IFOV)	1.9mrad
	Focus	Focusable, 61cm (24") to infinity
	Temperature Scale	°C or °F selectable
	Palettes	Gray, Ironbow, or Rainbow selectable
	Measurement Modes	Automatic, Semi-Automatic, or Manual selectable
	Laser On/Off	✓
	Gain Control	✓
	Level Control	✓
	LCD Backlight	Bright, Dim, Off selectable
Operational	Adjustable Emissivity * (0.10 to 1.00 by 0.01)	✓
	Liquid Crystal Display	TFT technology—optimized for both indoor and outdoor use
	Reflected Background Temperature	-50 to 460°C (58 to 860°F)
	Ambient Operating Temperature	0 to 50°C (32 to 122°F)
	Relative Humidity	10 to 90% Non-condensing
	Storage Temperature	-25 to 70°C (-13 to 158°F) [without batteries]
	Storage Capacity	100 images
	Laser On Icon	✓
	Low Battery Icon	✓
	Palette Icon	✓
Electrical	Measurement Mode Icon	✓
	Thermal Analysis Software	InsidIR (included)
	PC Software Operating Systems	Microsoft® Windows® 98®, Windows 2000®, or Windows XP®
	Power	6 AA batteries (not included) or rechargeable battery pack (included)
	Battery Life	Min. 5 hours continuous use
Other	Data Transfer	USB interface, total transfer time up to 30s for 100 pictures
	Storage Device	Flash Memory
	Tripod Mount (6.35 mm (1/4) 20 unc threading)	✓
Accessories/ Options	Weight (includes batteries)	1 kg (2.2 lb)
	Standard Accessories	<ul style="list-style-type: none"> • Multi-language Interactive Manual (CD ROM) • InsidIR Software • Docking Station with Universal Power Adapter and USB Connection • Hardshell Carrying Case • USB Computer Cable • Rechargeable and Non-rechargeable Battery Packs (batteries not included) • Multi-Language Thermography Training Presentation (CD ROM) <ul style="list-style-type: none"> • Carrying Pouch • Wrist Strap • Quick Reference Card
	Options	NIST Calibration certificate

*For more details, visit www.raytek.com/emissivity.htm

Worldwide Headquarters

Raytek Corporation
1201 Shaffer Rd., PO Box 1820
Santa Cruz, CA 95061-1820 USA
Tel: 1 800 866 5478
1 831 458 1110
Fax: 1 831 425 4561
solutions@raytek.com

Raytek China Company
Beijing, China
Tel: 86 10 6439 2255
Fax: 86 10 6437 0285
info@raytek.com.cn

Raytek Japan, Inc.
Osaka, Japan
Tel: 81 6 4390 5015
Fax: 81 6 4390 5016
info@raytekjapan.co.jp

South American Headquarters
Raytek do Brasil
Sorocaba, SP Brasil
Tel: 55 15 32176046
Fax: 55 15 32175694
info@raytek.com.br

European Headquarters

Raytek GmbH
Berlin, Germany
Tel: 49 30 4 78 00 80
Fax: 49 30 4 71 02 51
raytek@raytek.de

Raytek UK Ltd.
Milton Keynes, United Kingdom
Tel: 44 1908 630800
Fax: 44 1908 630900
ukinfo@raytek.com

Raytek France
Palaiseau, France
Tel: 33 1 64 53 15 40
Fax: 33 1 64 53 15 44
info@raytek.fr

Worldwide Service
Raytek offers services including emergency repairs and calibration. For more information, contact your local office or e-mail: support@raytek.com



Raytek is an ISO 9001 certified company

www.raytek.com

for up-to-the-minute features

Raytek®